



Bedrooms 1

Bathrooms 1

M² Built 80

M² Terrace 22

M² Garden 0

THE PROJECT

48 exclusive homes

The Sight Golf Residences is an exclusive private residential project comprising 48 homes in a natural setting, located frontline golf on one of the finest golf courses in Europe. The project offers 1-and 2-bedroom residences, each featuring spacious terraces that invite relaxation while enjoying the breathtaking views of the natural surroundings.

- 1 & 2 Bedrooms
- Gym
- Gastrobar
- Spa, sauna and hydro massage

INTERIORS

The highest standards

Contemporary kitchens, underfloor heating, the highest qualities and open-plan spaces ensure exceptional comfort and high energy efficiency.

North and South-east facing, they offer breathtaking views of the sea, golf course, and mountains, as well as spectacular sunrises and sunsets.

Open-plan Kitchens with spectacular views!

AMENITIES

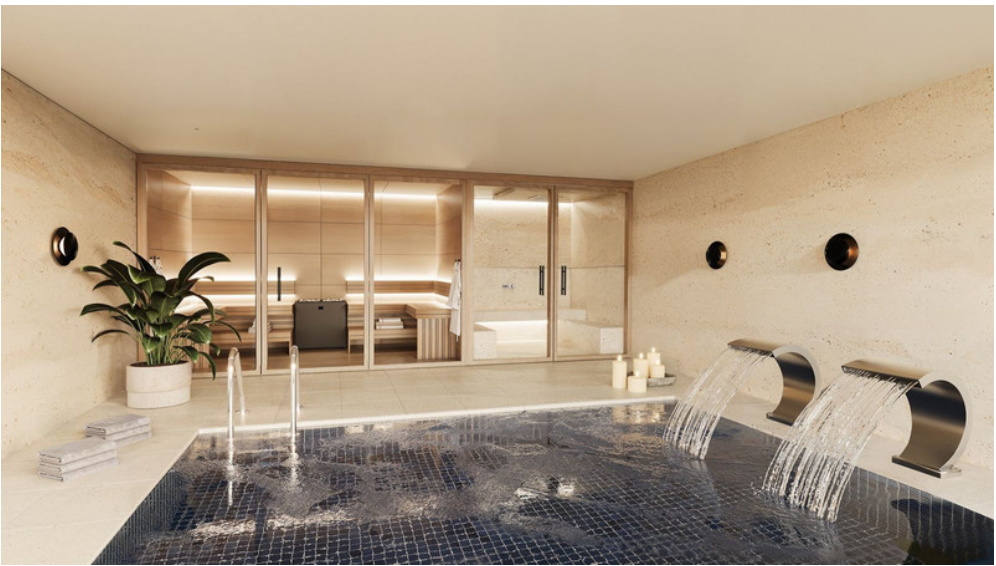
Designed for your well-being

The Sight Golf Residences offers a wide range of premium amenities designed for your well-being. The project features a luxurious indoor wellness area with sauna, spa and hydro massage, a fully equipped gym and changing rooms to maintain an active lifestyle, and an infinity outdoor pool with sun lounge area perfect for relaxing under the Mediterranean sun all year-round.

Tel:646 140 816

- www.eleganthomesmarbella.be -

info@eleganthomesmarbella.be





Bedrooms 2

Bathrooms 2

M² Built 88

M² Terrace 32

M² Garden 0

THE PROJECT

48 exclusive homes

The Sight Golf Residences is an exclusive private residential project comprising 48 homes in a natural setting, located frontline golf on one of the finest golf courses in Europe. The project offers 1-and 2-bedroom residences, each featuring spacious terraces that invite relaxation while enjoying the breathtaking views of the natural surroundings.

- 1 & 2 Bedrooms
- Gym
- Gastrobar
- Spa, sauna and hydro massage

INTERIORS

The highest standards

Contemporary kitchens, underfloor heating, the highest qualities and open-plan spaces ensure exceptional comfort and high energy efficiency.

North and South-east facing, they offer breathtaking views of the sea, golf course, and mountains, as well as spectacular sunrises and sunsets.

Open-plan Kitchens with spectacular views!

AMENITIES

Designed for your well-being

The Sight Golf Residences offers a wide range of premium amenities designed for your well-being. The project features a luxurious indoor wellness area with sauna, spa and hydro massage, a fully equipped gym and changing rooms to maintain an active lifestyle, and an infinity outdoor pool with sun lounge area perfect for relaxing under the Mediterranean sun all year-round.

Tel:646 140 816

- www.eleganthomesmarbella.be -

info@eleganthomesmarbella.be

